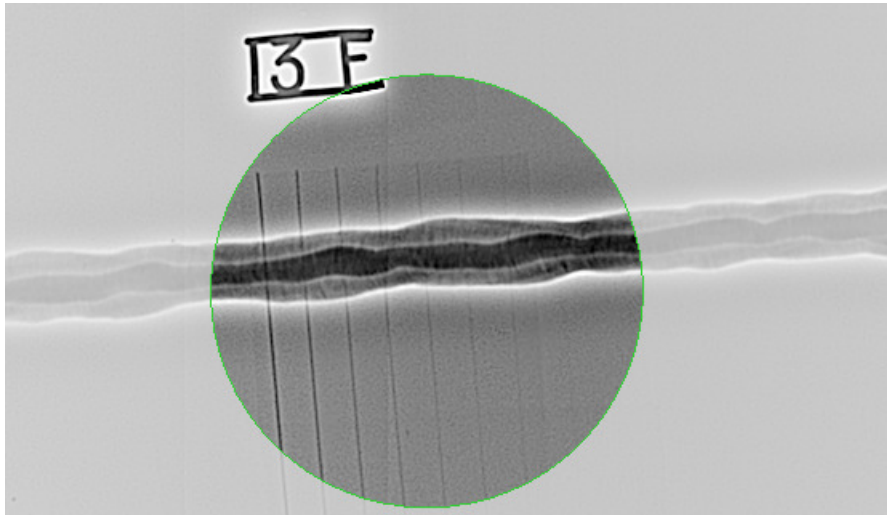


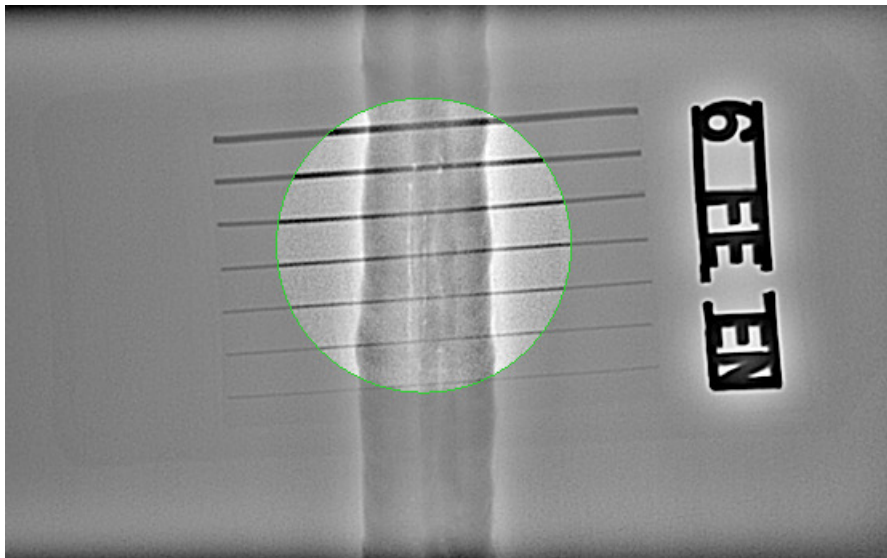
12 mm Fe plate + welding with a thickness ~ 15 mm + Cu 1.6 mm thick
 160 kV – 4 mA – 60 s – 100 cm with **DeReO WA-F**
 IQI W15 (125 μ m) is resolved (0.9 %) ; ASTM E 1025 : 2T-1 is resolved (> 1.4 %)



2 mm Fe plate with DeReO WA-P – 200 μm
IQI W19 (50 μm) is resolved



2 x 3 mm thick – 3 inches diameter Fe pipe
135 kV – 1.2 mA – 30s – 90 s with DeReO WA-P 200 μm
IQI W16 (100 μm – 1.7 %) / W17 (80 μm – 1.3 %) is resolved



25.4 mm / 1 inch Fe plate with DeReO WA-P – 200 μ m
All IQI wires are resolved (W12 = 250 μ m \rightarrow better than 1 %)