

# Portable High Energy X-ray DDA for heavy duty inspections

# Dereo HE

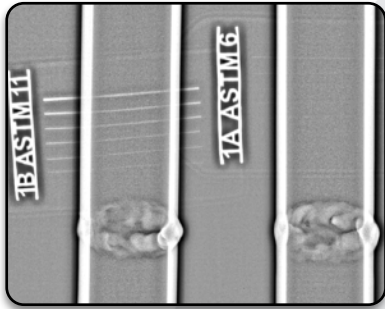


[www.xriss.eu](http://www.xriss.eu)

## APPLICATIONS

X-ray of high density materials and large thickness :

- Weldings
- Profile Radiography
- CUI (Corrosion Under Insulation)
- Castings
- Ammunitions
- Ballistic plates, ...



## KEY FEATURES

### Portable

Battery powered and wireless module.

Generate X-ray pictures anywhere : use the **Dereo HE** in a shielded cabinet and take it out at any time in order to work on the field.

### High Energy

Electronics are sensitive to X-ray. **Dereo HE** is compatible with all existing sources (X-ray, gamma, betatrons, linear accelerators, ...) and all energies.

### Robust

Tough handle, bumpers, military standard connectors, strong carrying case, ... will definitely grant a high level of robustness of your **Dereo HE** on the field. **IP67** certified.

### Quick set-up

Very fast set-up and use thanks to smart hard- and software features.

### Digital

Immediate image after couple of seconds.

**Very user-friendly Maestro** software.

Post-processing.

**DICONDE** Image format for universal file exchange.

Easy archiving & reporting.

### Image quality

Automatic and fast averaging.

Pixel size from 200 down to 75  $\mu\text{m}$ !

### Highest sensitivity

Excellent signal to noise ratio ( $\text{SNR} > 500$ ) thanks to smart calibration process and contrast resolution better than 1% (EN 462-1).

High penetration capability.

# Dereo HE SPECIFICATION

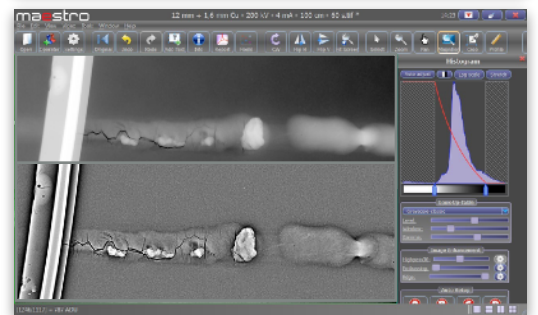


MODEL	ACTIVE AREA (cm)	PIXEL SIZE (µm)	GREY LEVEL (bit)	EXTERNAL DIMENSIONS (mm) without bumpers	WEIGHT (kg) battery included	WIRELESS
<b>Dereo HE 1723</b>	17 x 23	75	16	208 x 256 x 30	2.7	Yes
<b>Dereo HE 2329</b>	23 x 29	75	16	322 x 355 x 17	3,4	Yes
<b>Dereo HE 2532</b>	25 x 32	124	16	322 x 355 x 19	3.8	Yes
<b>Dereo HE 3643</b>	36 x 43	140	16	400 x 470 x 19	5.9	Yes
<b>Dereo HE 4040</b>	40 x 40	200	14 or 16	605 x 586 x 25	12.3	Yes

**Unique :** let us know your application and **X-RIS** will select the right scintillator for you.

## Maestro SOFTWARE

- Software interfaces developed **by and with field users**
- **Maestro Touch** for touchpads and **Maestro** for laptops
- Very **intuitive** software interfaces. Access to all key tools of **Maestro Touch** with your thumbs and with one click mouse on **Maestro**
- Zoom in / out, screen adjustment, rotation, horizontal and vertical flip, cropping, ...
- Access to the LUT (look-up-table)
- Black and white reversal
- Annotations
- **ACUITY** Filter
- **Real time** magnifier
- **Real time** filters (Acuity, Defect, Contrast, Edge, Noise reduction, ...)
- Smart measurement tools
- NDT Tools for normative inspections
- Bad pixels map
- **DICONDE**
- Compliant with all major NDT standards (ISO 17636, ASTM-E 2698, E2736, E2737, E2597, Safran PR5250, Airbus AITM 6-7007 and Boeing BSS-7044
- Wall thickness measurement
- Control of many X-ray generator brands and models
- Any language available upon request
- **X-RIS** is open to discuss the development of new software tools



## Dereo HE ACCESSORIES

**X-RIS** makes your job easy and supplies :

- 40m cable reel (designed by **X-RIS** for minimization)
- Bipods and tripods
- Carrying case and backpack
- Touchpads and laptops
- **GemX** portable battery powered X-ray generators

