

# Battery powered **P**ortable X-ray DDA for **S**mart NDT inspections

# Dereo PS



[www.xris.eu](http://www.xris.eu)

## APPLICATIONS

- ▶ Portable digital system for indoor and outdoor x-ray jobs
- ▶ Quality control of aerospace structures, shipyards, pipes, power lines, buildings, railway, windmills, ammunitions, ...
- ▶ Periodic maintenance control
- ▶ Weldings, castings, corrosion under insulation, composite materials,...
- ▶ Historical assets (in Museums, laboratories, universities,...)



## KEY FEATURES

- |                  |   |
|------------------|---|
| Very portable    | X-ray pictures anywhere.<br>Battery powered.  |
| Large area       | Active area of 24 x 30 cm.  |
| Quick set-up     | X-ray pictures at anytime.  |
| <b>Digital</b>   | Instant results.<br>Very easy set-up and use, thanks to the automatic real-time filter magnifier, and to the wide contrast latitude of digital technologies.<br>Very user-friendly <b>Maestro</b> software.<br>Post-processing.<br>TIFF & JPG format.<br>Easy archiving & reporting.<br>No more consumables (films and chemicals) & dark room needed. |
| Image quality    | High resolution (from 120 down to 68 $\mu$ m depending on binning mode) and high contrast (16 bit).   |
| High sensitivity | Ability to X-ray a large range of different objects and materials, from light materials such as paper, up to several mm Fe.   |
| <b>Real-time</b> | <b>Real-time X-ray pictures</b> for urgent image acquisition and analysis.  |
| Robust           | Real 2D panel. <b>There are no mirror</b> , neither fragile moving parts inside the detector such as engine and belt.   |

# Dereo PS SPECIFICATION

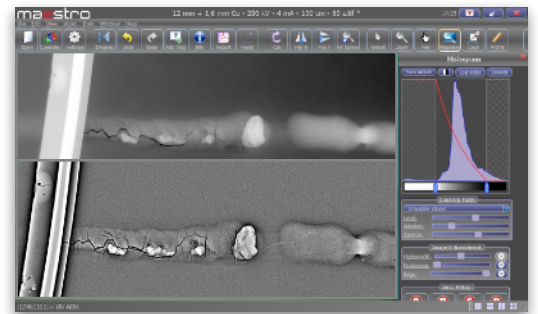


MODEL	ACTIVE AREA (cm)	PIXEL SIZE (μm)	GREY LEVEL (bit)	EXTERNAL DIMENSIONS (mm)	WEIGHT (kg) battery included	WIRELESS
Dereo PS 2530	24 x 30	68 or 120	16	256 x 410 x 77	7.2	Yes

**Unique :** let us know your application and **X-RIS** will select **the right scintillator for you.**

## Maestro SOFTWARE

- ▶ Software interfaces developed **by and with field users**
- ▶ **Maestro Touch** for touchpads and **Maestro** for laptops
- ▶ Very **intuitive** software interfaces. Access to all key tools of **Maestro Touch** with your thumbs and with one click mouse on **Maestro**
- ▶ Zoom in / out, screen adjustment, rotation, horizontal and vertical flip, cropping, ...
- ▶ Access to the LUT (look-up-table)
- ▶ Black and white reversal
- ▶ Annotations
- ▶ **ACUITY** Filter
- ▶ **Real time** magnifier
- ▶ **Real time** filters (Acuity, Defect, Contrast, Edge, Noise reduction, ...)
- ▶ Smart measurement tools
- ▶ NDT Tools for normative inspections
- ▶ Bad pixels map
- ▶ **DICONDE**
- ▶ Compliant with all major NDT standards (ISO 17636, ASTM-E 2698, E2736, E2737, E2597, Safran PR5250, Airbus AITM 6-7007 and Boeing BSS-7044)
- ▶ Wall thickness measurement
- ▶ Control of many X-ray generator brands and models
- ▶ Any language available upon request
- ▶ **X-RIS** is open to discuss the development of new software tools



## Dereo PS ACCESSORIES

**X-RIS** makes your job easy and supplies :

- ▶ **GemX** constant potential X-ray generator
- ▶ Wireless modules
- ▶ Battery-powered
- ▶ IP66 Carrying case
- ▶ Backpack

