

# Portable battery-powered DDA for **H**igh **R**esolution NDT inspections

# Dereo HR

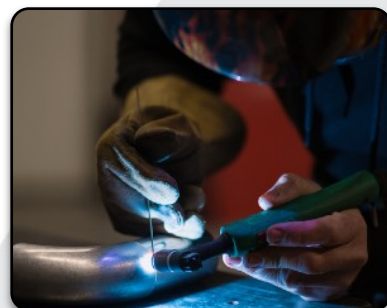
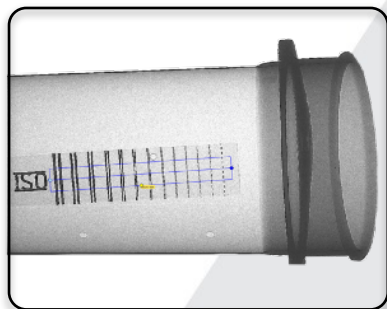


[Website](#)

## APPLICATIONS

Makes possible DR inspection in hard-to-reach areas :

- Small bore pipe and spool welds
- Small diameter Ti and Al pipe welds
- E-beam welds
- Civil and military aircraft NDE
- Restauration & conservations
- Welding training centers, universities, ...



## KEY FEATURES

Easy and  
quick set-up

Generates X-ray pictures anywhere : use the **Dereo HR** in a shielded cabinet or take it out at any time to use the **Dereo HR** as the most portable tool on site.

Ultra light DDA (**Dereo HR** : 1 kg, only).  
Its compactness will definitely grant a high level of robustness of your **Dereo UP** on the field.  
Battery powered.

Image quality

Dynamic DDA.  
Immediate image after couple of seconds.  
**Very user-friendly Maestro** software.  
Post-processing.  
**DICONDE** format for universal file exchange.  
Easy archiving & reporting.

Unique

Optimized distance from the 3 sides, in order to reduce the dead area, to cover even more applications.  
With **GemX** X-ray generators, change kV and mA during X-ray shot and adjust the image. « You just can't fail your x-ray shot ! » Automatic averaging.  
**Dereo HR** (49  $\mu$ m) complies with ISO 17636-2 :

- Class B for thickness higher than 1.5 mm.
- Class A for thickness higher than 0.1 mm.

Power

Battery powered thanks to **X-RIS'** GUC.



## Dereo HR SPECIFICATIONS

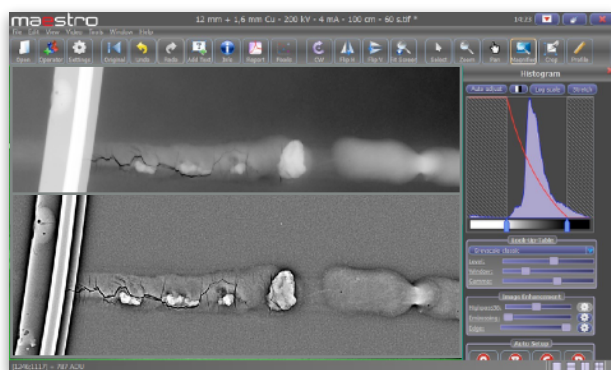


| MODEL                | ACTIVE AREA<br>(cm) | PIXEL SIZE<br>(μm) | GREY LEVEL<br>(bit) | FRAME RATE<br>(fps) | EXTERNAL DIMENSIONS<br>(mm) without bumpers | WEIGHT<br>(kg) battery included | WIRELESS |
|----------------------|---------------------|--------------------|---------------------|---------------------|---|---------------------------------|----------|
| <b>Dereo HR 1506</b> | 15 x 06             | 49                 | 14                  | 9                   | 80 x 230 x 26.5                             | 1                               | Yes      |

**Unique :** let us know your application and **X-RIS** will select the right scintillator for you.

## Maestro SOFTWARE

- Software interfaces developed by and with field users
- **Maestro Touch** for touchpads and **Maestro** for laptops
- Very **intuitive** software interfaces. Access to all key tools of **Maestro Touch** with your thumbs and with one click mouse on **Maestro**
- Zoom in / out, screen adjustment, rotation, horizontal and vertical flip, cropping, ...
- Access to the LUT (look-up-table)
- Black and white reversal
- Annotations
- **ACUITY** Filter
- **Real time** magnifier
- **Real time** filters (ACUITY, Defect, Contrast, Edge, Noise reduction, ...)
- Smart measurement tools
- NDT Tools for normative inspections
- Bad pixels map
- **DICONDE**
- Compliant with all major NDT standards (ISO 17636, ASTM-E 2698, E2736, E2737, E2597, Safran PR5250, Airbus AITM 6-7007 and Boeing BSS-7044)
- Wall thickness measurement
- Control of many X-ray generator brands and models
- Any language available upon request
- **X-RIS** is open to discuss the development of new software tools



## Dereo HR ACCESSORIES

**X-RIS** makes your job easy and supplies :

- Carrying case and backpack
- Touchpads and laptops
- **GemX** portable battery powered X-ray generators

