

X-ray DDA for silver film replacement in your **C**urrent **S**ystem

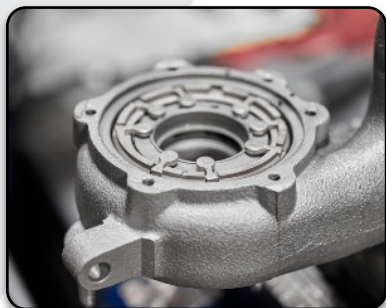
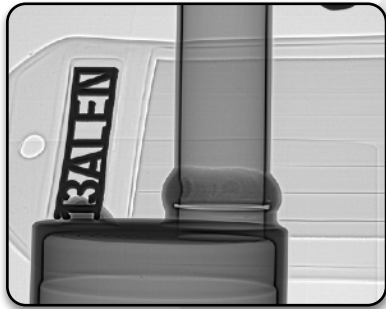
Dereo RAD



[Website](#)

APPLICATIONS

- ▶ Weldings on pipes and plates
- ▶ Al, Fe, Ti, inconel and other alloys, plastic casting defects such as porosities, shrinkages and inclusions
- ▶ Honey combs structures, composite materials (wrinkles, inclusions, ...)
- ▶ Historical assets
- ▶ Forensic investigations



KEY FEATURES

Digital

Direct digital image on the computer screen (no manual process).
User-friendly thanks to very **intuitive Maestro NDT** software.
Post-processing with real time filters.
DICONDE, TIFF & JPG formats available.
Easy archiving & reporting.
Efficiency and profitability drastically increased.

Film -> digital radiography

Dereo RAD is the easiest tool to work with in order to switch from traditional X-ray films to digital radiology inspection.

X-ray video

X-ray video (1 fps scopy) for perfect and **rapid image adjustment** :
No more headaches about the kV and mA calculation.

Image quality

Excellent signal to noise ratio (SNR) and contrast resolution better than 1% (EN 462-1).
14 or 16 bit.
Automatic and fast averaging.
Different scintillator thickness available.

Quick set-up

Very easy set-up (plug & play) and use thanks to smart hard- and software features.

Compatible with any high energy sources

Electronics of **Dereo RAD** are very well shielded and protected from X-ray dose. Thanks to that, it works with any other kind of constant potential generator, gamma sources (Se, Ir, Co) as well as betatrons and linear accelerators. Synchronization is not needed. Delivery and installation is achieved very easily with existing generators at customer site.

Reinforced casing

In order to prevent scratches and knocks on the flat panel, **X-RIS** designed a reinforced casing which contains the DDA, a mains power supply, tough connectors, as well as the necessary lead shielding.

Dereo RAD SPECIFICATIONS

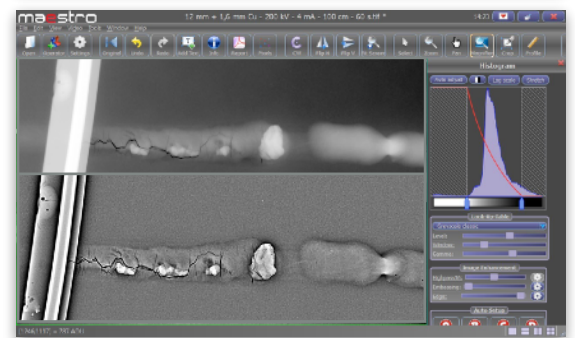
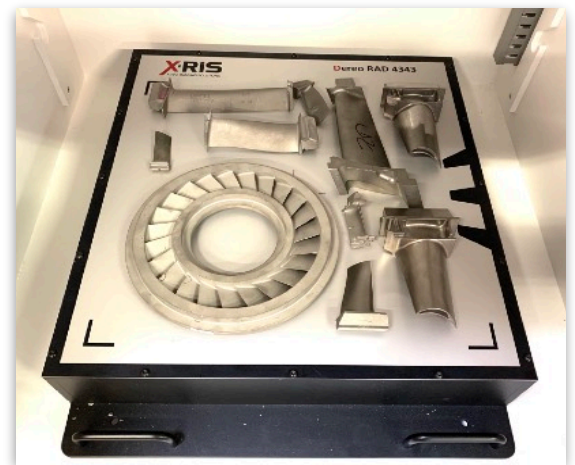


MODEL	ACTIVE AREA (cm)	PIXEL SIZE (μm)	GREY LEVEL (bit)	POWER
Dereo RAD 2532	25 x 32	124	16	Universal mains power supply
Dereo RAD 3030	30 x 30	145	16	Universal mains power supply
Dereo RAD 4040	40 x 40 2048 x 2048	200	14 or 16	Universal mains power supply
Dereo RAD 4343	43 x 43	139	16	Universal mains power supply

Unique : let us know your application and **X-RIS** will select **the right scintillator for you.**

Maestro NDT SOFTWARE

- ▶ Software interfaces developed **by and with field users**
- ▶ Very **intuitive** software interfaces. All key tools of **Maestro** accessible with one mouse click, only.
- ▶ Zoom in / out, screen adjustment, rotation, horizontal and vertical flip, cropping, ...
- ▶ Access to the LUT (look-up-table)
- ▶ Black and white reversal
- ▶ Annotations
- ▶ **ACUITY** Filter
- ▶ **Real time** magnifier
- ▶ **Real time** filters (Acuity, Defect, Contrast, Edge, Noise reduction, ...)
- ▶ Smart measurement tools
- ▶ NDT Tools for normative inspections
- ▶ Bad pixels map
- ▶ **DICONDE**
- ▶ Compliant with all major NDT standards (ISO 17636, ASTM-E 2698, E2736, E2737, E2597, Safran PR5250, Airbus AITM 6-7007 and Boeing BSS-7044)
- ▶ Wall thickness measurement
- ▶ Control of many X-ray generator brands and models
- ▶ Any language available upon request
- ▶ **X-RIS** is open to discuss the development of new software tools



Dereo RAD ACCESSORIES

X-RIS makes your job easy and supplies :

- ▶ (**μ**)**GXC** X-ray sources from 80 to 450 kV, linear accelerators (up to 15 MeV),...
- ▶ **Dxbox** X-ray cabinets
- ▶ Collimators controlled from **Maestro**
- ▶ **Maestro** viewer
- ▶ Specific computer screens for normative inspections
- ▶ IQI accessories
- ▶ (**μ**)**GemX** sources

